

Case Study:

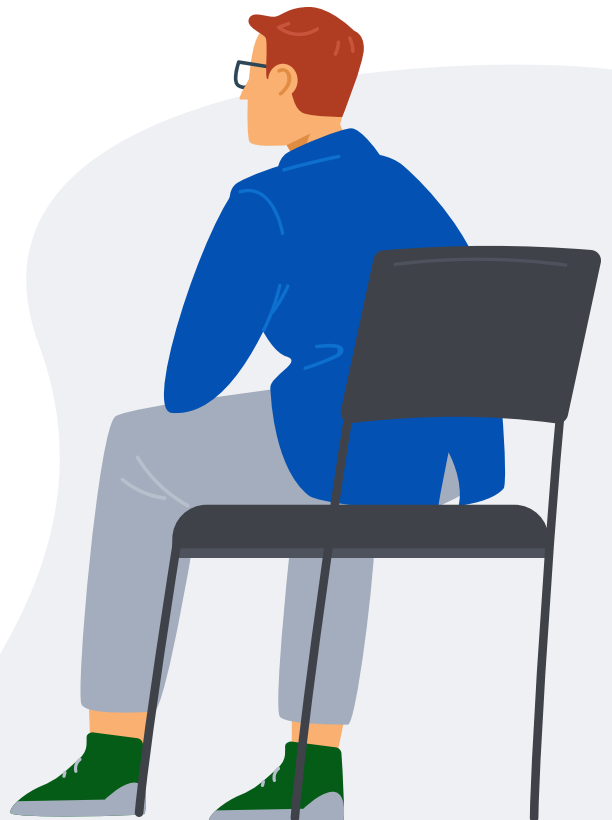
How Axiom Medical's Dual Physical + Mental Health Assessment Saved a Life and Helped an Employee with Autism in Need

Challenge:

When an employee sustains a work-related injury, employers typically focus on the physical aspect of the injury. Yet, up to 60% of employees who sustain a work-related injury may have experienced behavioral health symptoms before the injury. Though typically, the employer has no knowledge of past mental health history, and employees do not share their mental health challenges for fear of judgment.

Solution:

Axiom Medical is the only occupational health provider that has made a dual physical + mental health assessment standard for all new injury cases. Axiom's behavioral health nurse uses the K6 screening to evaluate the severity of mental health distress and ultimately avoid a mental health crisis, such as suicide.



Results:

A specific case highlights the effectiveness of Axiom Medical's approach. A 25-year-old male production associate in the chemical industry had a prior mental health history of suicide attempts and is autistic. Prior to calling the 24/7 Axiom Injury Hotline to report an elbow strain injury sustained at work, the employee had attempted suicide. Due to his autism, the employee struggled to clearly communicate the mental health challenges he was experiencing and did not tell his employer. He did not have health insurance benefits that would meet his mental health needs.

Upon referral to Axiom Medical Behavioral Health services, the behavioral health nurse completed a K6 screening with scores reflecting severe distress. The employee shared that prior to calling Axiom Medical, he had attempted suicide at the home he shared with his mother. Recognizing the employee was at high risk of death by suicide, the behavioral health nurse provided mental health first aid recommendations and helped the employee develop a mental health safety plan. The nurse provided both emergent and extended-term resources, including further mental health evaluation and treatment, and located a local support group for him.

Conclusion:

Had the employee not had access to Axiom Medical Behavioral Health services, made available to him by his employer, the employee could have ended his life by suicide, which has direct and indirect implications for the employer, including the psychological impact on other colleagues, public perception of the brand, and productivity losses. Axiom Medical's unique approach to performing a dual physical + mental health assessment is a valuable service that helps employees in need and can ultimately save lives. By recognizing the importance of their employees' mental health, employers can improve their overall workplace culture, retain valuable employees, and boost productivity.



axiomllc.com
(877) 502-9466

Axiom Medical is Here to Help!

With two decades of experience in employee total health programs and population health management, we can help your organization with any workplace healthcare needs.